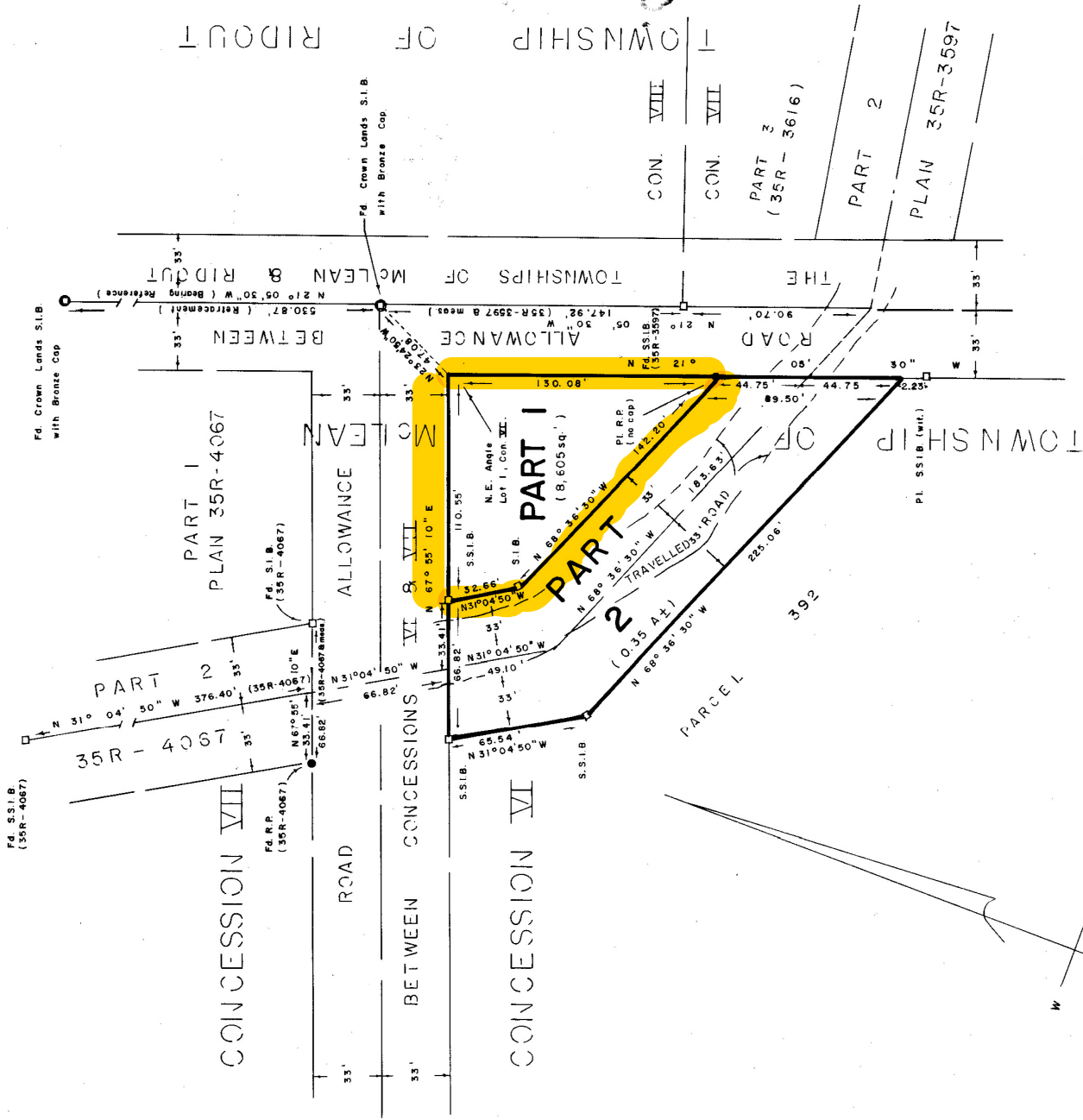


*Calvin Brew*  
DEPUTY LAND REGISTRAR.

PARTS 1 and 2 — PART OF PARCEL 392.  
( Subject to rights in transfer 76796. )

2-M-1

MPS — 6185



LEGEND

DISTANCES ARE IN FEET AND DECIMALS THEREOF.  
 BEARINGS ARE ASTRONOMIC AND ARE DERIVED FROM THAT PORTION OF THE E OF  
 THE ROAD ALLOWANCE BETWEEN THE TOWNSHIPS OF McLEAN AND RIDOUT  
 WHICH IS ASSUMED TO BE N 21° 05' 30" W AS SHOWN ON A PLAN OF  
 RETRACEMENT SIGNED BY D.F. BOYER, O.L.S., DATED OCT. 31, 1975 OF  
 RECORD IN THE LAND REGISTRY OFFICE AS PLAN MISC. — 34, RETRACEMENT CONFIRMED  
 NOV. 5, 1970.

SURVEYOR'S CERTIFICATE:

I HEREBY CERTIFY THAT:  
 1. THIS SURVEY AND PLAN ARE CORRECT AND IN ACCORDANCE  
 WITH THE SURVEYS ACT AND THE LAND TITLES ACT AND THE  
 REGULATIONS MADE THEREUNDER.  
 2. I WAS PRESENT AT AND DID PERSONALLY SUPERVISE THE  
 SURVEY REPRESENTED BY THIS PLAN.  
 3. THIS PLAN CONTAINS A TRUE COPY OF THE FIELD NOTES OF  
 SURVEY.