

PLAN 1
RYDE

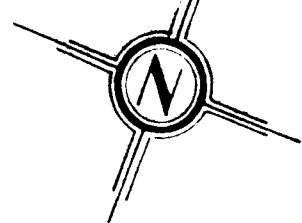
REGISTRY - OFFICE
DISTRICT OF MUSKOKA
FILED BY SPRING LAKE COMMUNITY ASSOCIATION
THIS 30th DAY OF DECEMBER A.D. 1963 AT 2:30 P.M.
AS PLAN #1 FOR THE TOWNSHIP OF RYDE
J.A.T. Anderson
DEPUTY REGISTRAR

PLAN OF SUBDIVISION OF
PART OF LOTS 12 and 13 - CONCESSION 10
TOWNSHIP OF RYDE
DISTRICT OF MUSKOKA

RYDE
PLAN 1

SCALE 1"=150'

WHEN PRINTED IN RED INK
THIS COPY IS AN
OFFICE COPY
AND MUST NOT BE REMOVED
FROM REGISTRY OFFICE FILES



NOTES:

THE N 69° 44' E (astronomic) OF THE ROAD ALLOWANCE BETWEEN CONCESSIONS 10 AND 11 GOVERNS ALL BEARINGS SHOWN HEREON.

STANDARD IRON BARS (1"x1"x4") PLANTED SHOWN THUS ALL OTHER LOT CORNERS MARKED WITH 1/2"x1/2"x24" IRON BARS SHOWN THUS

Approved under Section 28 of
THE PLANNING ACT
This 29th day of November 1963

MINISTER OF MUNICIPAL AFFAIRS

I HEREBY CERTIFY THAT THIS PLAN IS A DUPLICATE COPY OF A PLAN (BEING A SUBDIVISION OF PARTS LOTS 12 & 13 PREPARED BY BROWNE, CAVELL & JACKSON DATED AT TORONTO, THE 1st DAY OF NOV. 1963.

ONTARIO LAND SURVEYOR

SURVEYOR'S CERTIFICATE

I Wm Jackson, an Ontario Land Surveyor, certify that:
(a) I was present at and did personally superintend the survey represented by this plan
(b) this plan accurately shows the manner in which the lands (edged in red) have been surveyed by me.
(c) every angle of the exterior boundary of the plan is defined in the survey thereof by a monument and a monument is placed at one angle of each street intersection on the plan.
(d) I have indicated on the plan the position and form of each of the monuments.
(e) the monuments conform in all respects to requirements of Section 55 of The Surveyors Act.
(f) the survey was made by me between the 24th day of SEPT. 1963 and the 30th day of OCTOBER 1963.
(g) the survey has been accurately made in accordance with all provisions of The Registry Act relating thereto.
DATED at TORONTO the 1st day of NOVEMBER 1963.

ONTARIO LAND SURVEYOR

I hereby certify that this plan represents a true copy of the field notes taken in connection with the survey thereof.
DATED 1st day of NOVEMBER 1963.

ONTARIO LAND SURVEYOR

OWNERS' CERTIFICATE

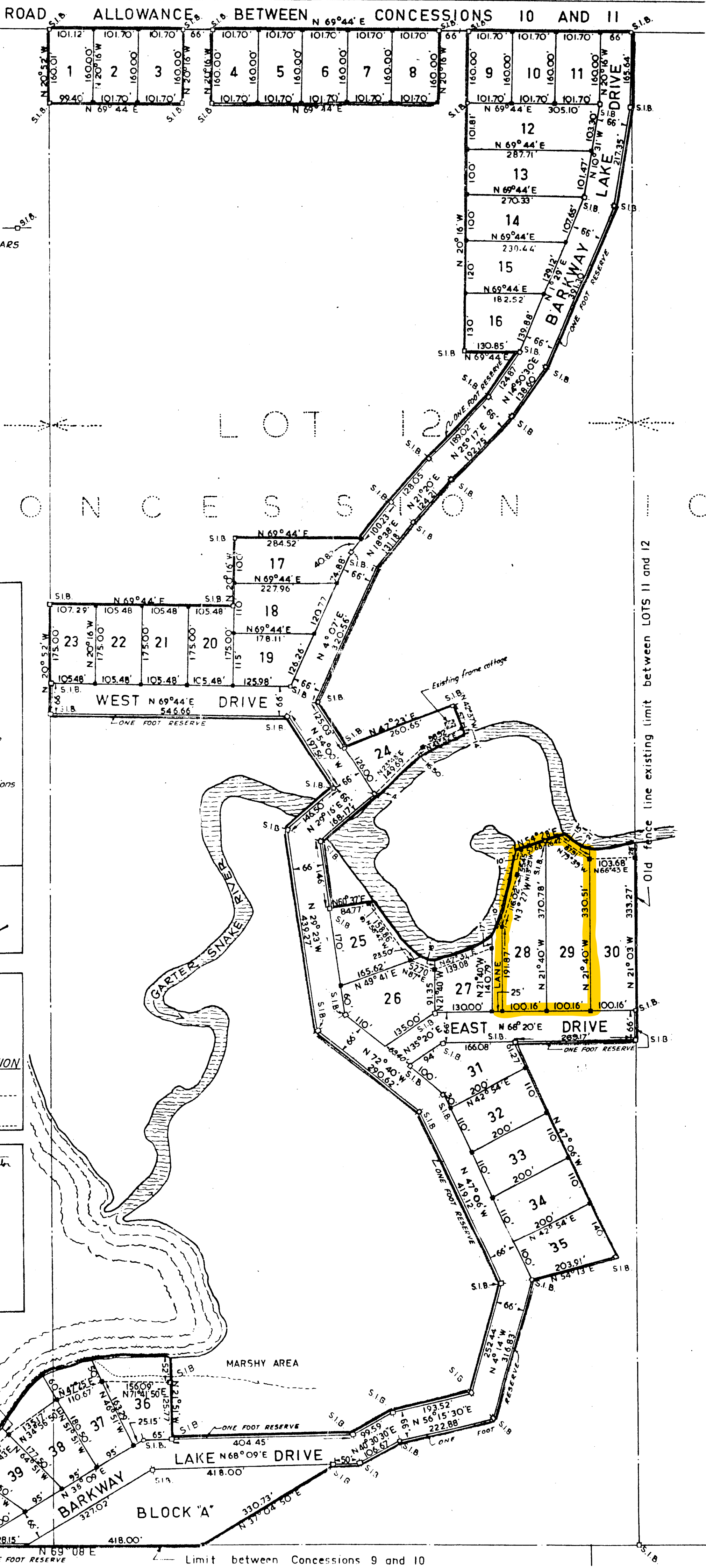
Lots 1 to 40 inclusive, Block 'A', the one foot reserves and lanes and BARKWAY LAKE DRIVE, WEST DRIVE and EAST DRIVE within the area outlined in red, are laid out in accordance with our instructions and the said streets are hereby dedicated for the purpose of public highways.

Witness
Spring Lake Community Association

President

County of York To Wit:
1. Melville D. Dasher of the City of Toronto in the County of York, Solicitor make oath and say:
1. That I was personally present and did see this plan and duplicate duly signed by J.A. Anderson
2. That the said plan and duplicate were signed by the said parties of the said City of Toronto
3. That I know the said parties.
4. That I am a subscribing witness to the said signing
Sworn before me at Toronto in the County of York this 1st day of November 1963.

A Commissioner, ETC.



BROWNE, CAVELL AND JACKSON
ONTARIO LAND SURVEYORS
281 Humbercrest Blvd. Ro. 6 6053
TORONTO