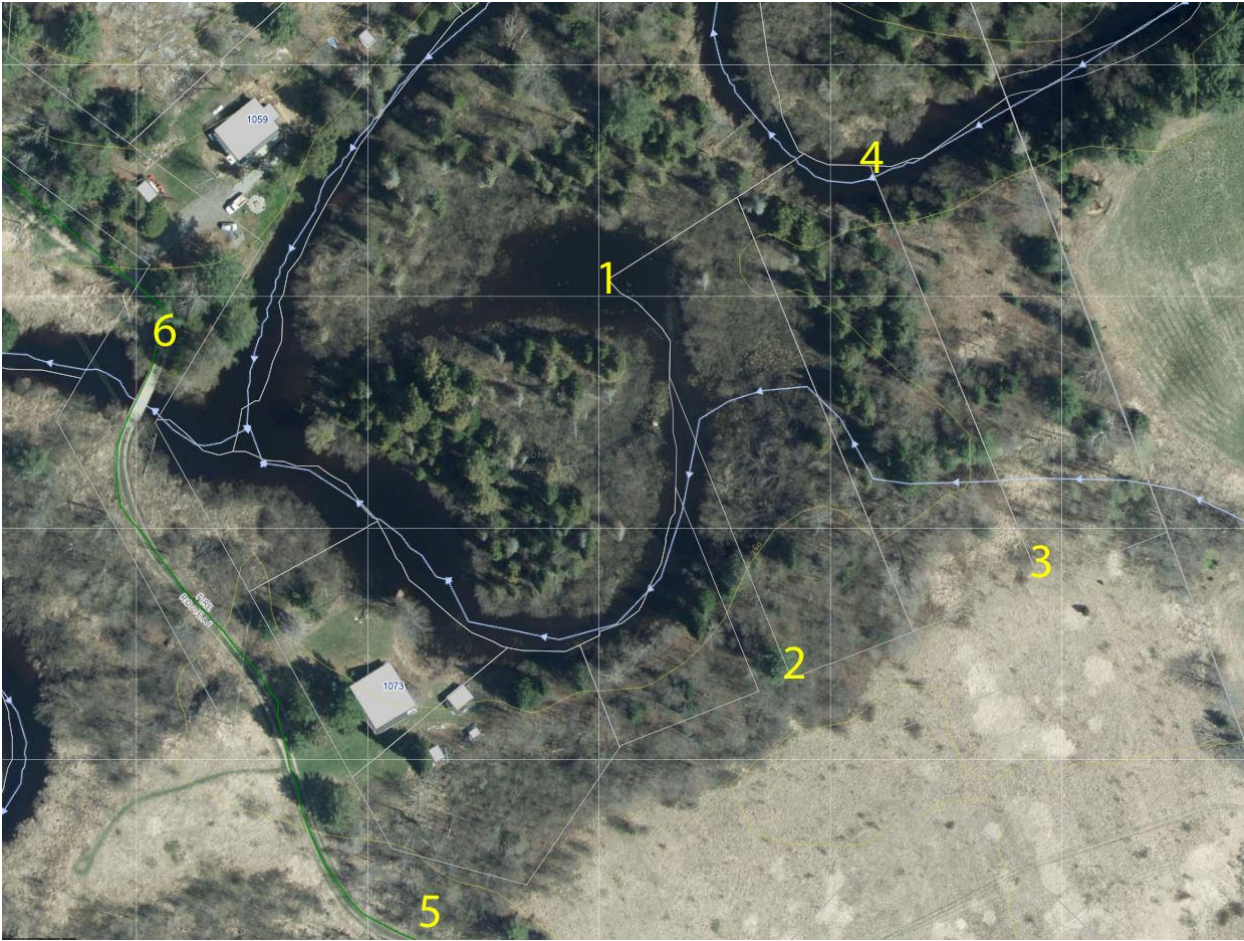


Locality Map of Garter Snake Creek Lot



Click on the below links to open location Google Maps, if you are planning to walk the property it is suggested that you save the locations as favourites, so that when you are at the property you can see where you are in relation to the boundaries of the property.

1. <https://goo.gl/maps/UnzRJRBiBpfw53Wb9>
2. <https://goo.gl/maps/J2bhZFpBDUdqT6RC6>
3. <https://goo.gl/maps/otDitVnDCx7dLMKf7>
4. <https://goo.gl/maps/woXDcC7PvDanSGkD9>
5. <https://goo.gl/maps/7mCbJhCCTABmjeRv8> - Turn left onto snowmobile trail
6. <https://goo.gl/maps/uX3nvg7caD1qtjLX7> - End of plowed road – park here, please do not block driveway.

Please note that the above coordinates are obtained from the towns website, but may be out by a few meters.

Please note rivers and creeks do not completely freeze in winter, do not try and walk on the Creek!

Snowshoes are recommended

Also if you are using Google Maps to navigate to the property, Google will try and take you to Fire Route A1 off Barkway Road, please ignore this and turn into Merkley Rd off Barkway and then into Fire Route A1 off Merkley.

