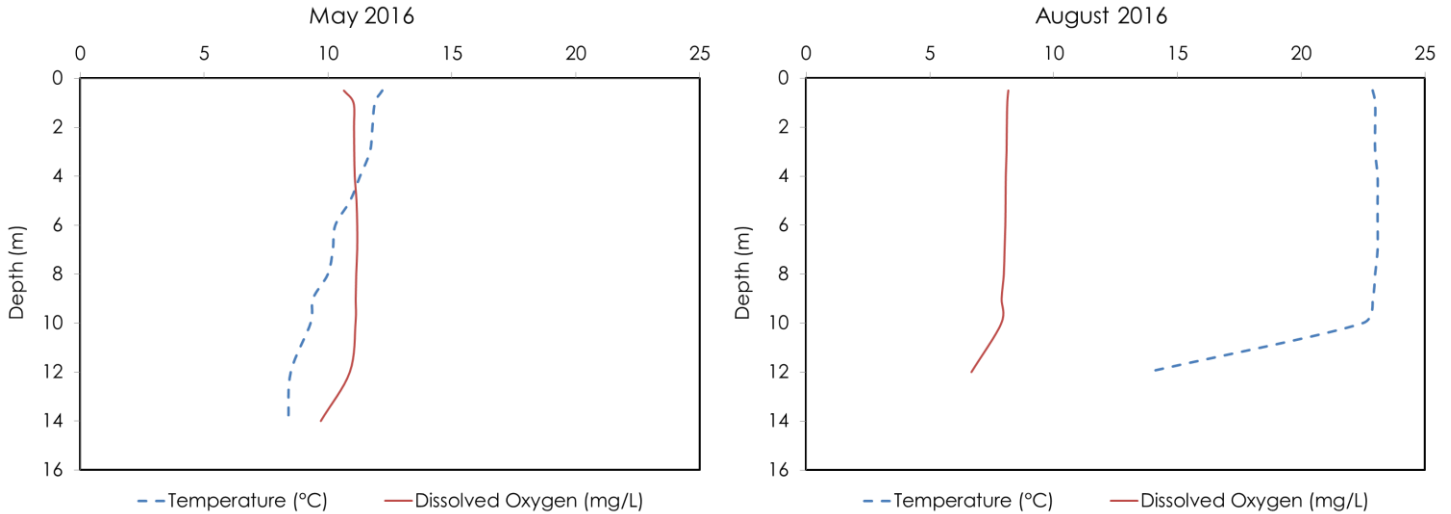


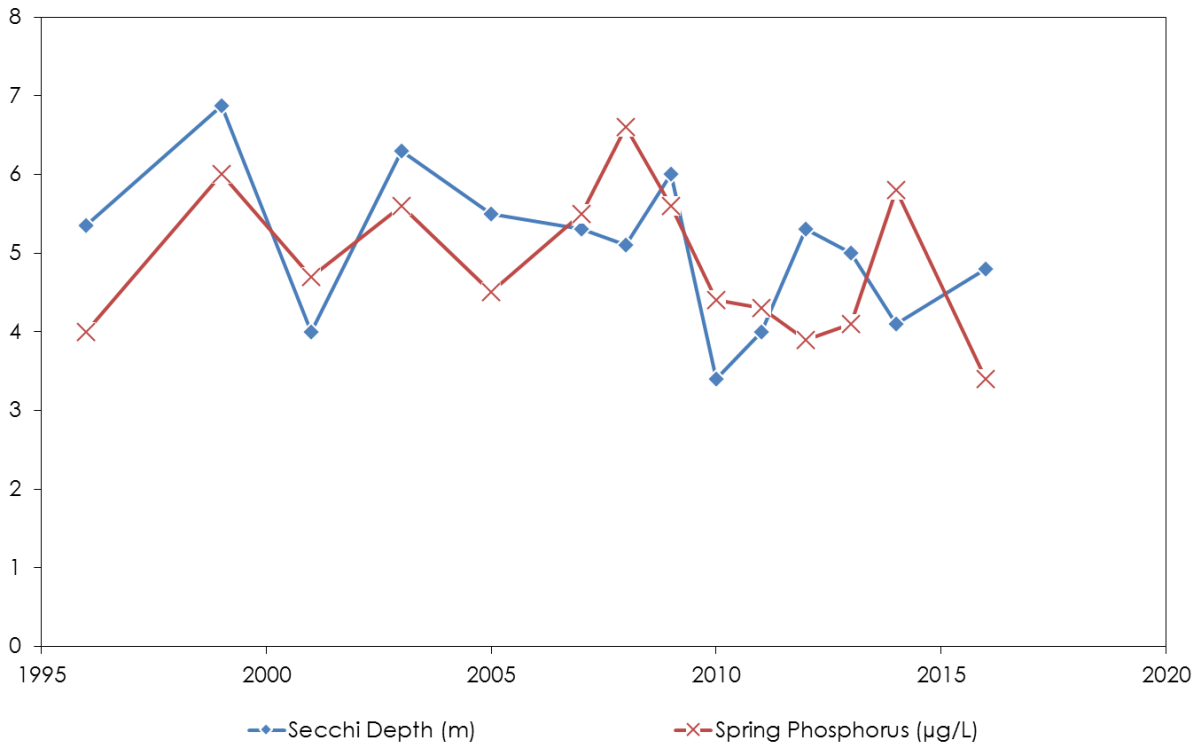
Lake Joseph – Cox Bay

Sample Point: 45.1092 -79.6192

Municipality:	Muskoka Lakes	Quaternary Watershed:	Lake Rosseau
Surface Area:	1.86 km²	Watershed Area (excluding lake):	4.62 km²
Maximum Depth:	14 m	Lake Trout Lake?	Yes
Wetland Area:	5 %	Secchi Depth (10-year average):	4.8 m
Phosphorus (10-year average):	4.8 µg/L	Sensitivity:	Moderate (OT)



Lake Joseph - Cox Bay Long Term Monitoring Data



This information is supplied without expressed or implied warranty of any kind, including warranty of fitness for a particular purpose. In no event will The District Municipality of Muskoka be liable for any damages, whether incidental, consequential or direct in conjunction with, or arising from the furnishing or use of this information.